



# INDOFINE Chemical Company, Inc.

121 Stryker Lane, Bldg. 30, Suite 1 • Hillsborough, NJ 08844 • U.S.A.

Phone: (908) 359-6778 • FAX: (908) 359-1179

website: [www.indofinechemical.com](http://www.indofinechemical.com)

e-mail: [chemical@indofinechemical.com](mailto:chemical@indofinechemical.com)

## CERTIFICATE OF ANALYSIS

Catalog Number: 023720S

Product Name: REBAUDIOSIDE A

CAS Number: [58543-16-1]

Lot Number: 1509675

Chemical Formula: C<sub>44</sub>H<sub>70</sub>O<sub>23</sub>

Molecular Weight: 967.02

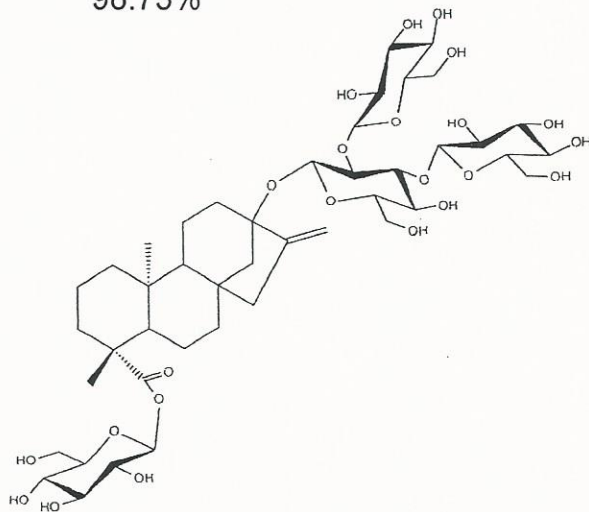
Botanical Source: Stevia rebaudiana

Appearance: White powder

Loss on drying: 1.6%

Storage: Store in a cool, dry place. Protected from light.

Purity(HPLC): 98.73%





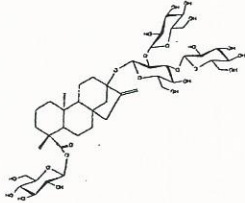
# INDOFINE Chemical Company, Inc.

121 Stryker Lane, Bldg. 30, Suite 1 • Hillsborough, NJ 08844 • U.S.A.

Phone: (908) 359-6778 • FAX: (908) 359-1179

website: [www.indofinechemical.com](http://www.indofinechemical.com)

e-mail: [chemical@indofinechemical.com](mailto:chemical@indofinechemical.com)



## HPLC ANALYSIS

Catalog No.: 023720S

Product Name: Rebaudioside A

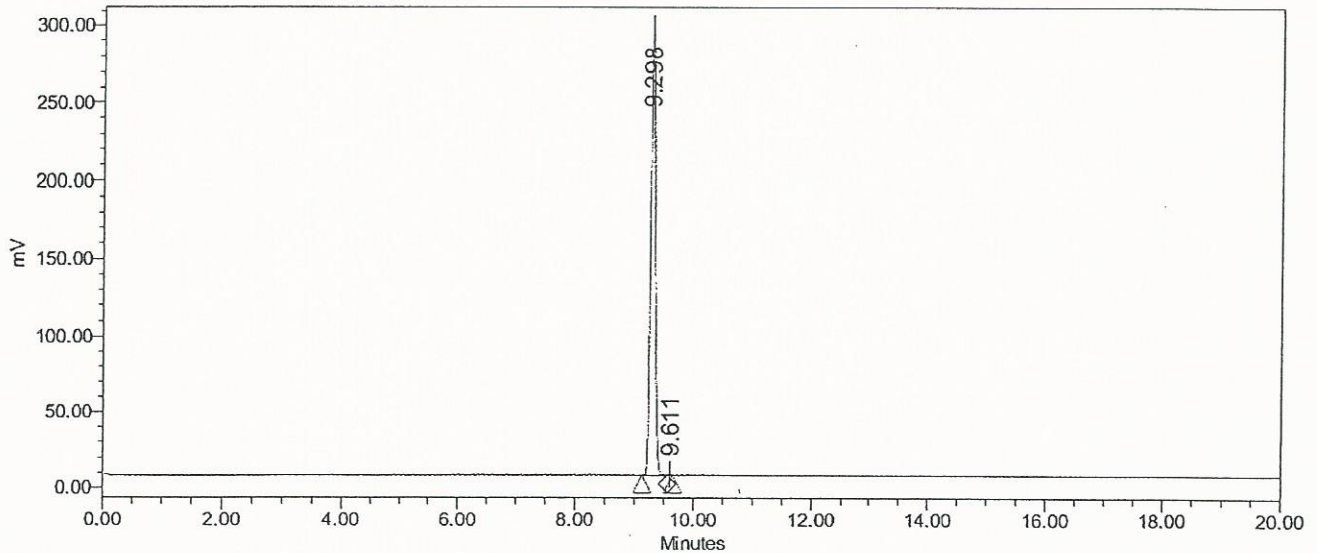
Lot No.: 1509675

### SAMPLE INFORMATION

Sample Name: Rebaudioside A  
Sample Type: Unknown  
Vial: 1:F,7  
Injection #: 1  
Injection Volume: 10.00 ul  
Run Time: 20.0 Minutes

Sample Set Name:  
Acq. Method Set: Rebaudioside A  
Processing Method: Samples 3  
Channel Name: SATIN  
Proc. Chnl. Descr.:

Auto-Scaled Chromatogram



#### Peak Results

	Name	RT	Area	% Area	USP Plate Count	USP Resolution
1		9.298	1593851	99.88	64478.07	
2		9.611	1857	0.12	385641.60	2.97